

SWH State of art???

July, 2012

KİLİS

COMMERCIAL USE

Species Latin name (mandatory) (optional)	Collected part If several parts are collected from the same species, please, use a different line for every plant part.	Annual volume (tonnes) Please consider the mean annual volume during the last 5 years.	Conservation status Please consider the conservation status at national level
<i>Origanum onites</i> L. - İzmir Kekliği	Herba	10.000	Cultivation
<i>Laurus nobilis</i> L. - Defne	Leaf Fruit	6.500	Plantation
<i>Salvia triloba</i> L. - Adaçayı	Herba	2.000	Cultivation
<i>Capparis spinosa/ovata</i> L. - Kapari	Bud	2.000	no
<i>Tilia rubra / argentea</i> DC. - İhlamur	Leaves & Flowers	250	Plantation
<i>Rosmarinus officinalis</i> L. - Biberiye	Herba	750	Cultivation
<i>Ceratonia siliqua</i> L. - Keçiboynuzu	Fruit	5.000	no
<i>Prunus mahaleb</i> L. - Mahlep	Fruit	150	Plantation
<i>Rhus coriaria</i> L. - Sumak	Fruit	1.500	no
<i>Glycyrrhiza glabra</i> L. - Meyankökü	Stolon	1.000	no

NON-COMMERCIAL USE			
Species Latin name (mandatory) and local name (optional)	Collected part If several parts are collected from the same species, please, use a different line for every plant part.	Importance Please describe briefly the reasons that make the species to be important (traditional use, conservation problems...)	Conservation status Please consider the conservation status at national level
<i>Origanum onites</i> L. - İzmir Kekigi	Herba	Spice, herbal tea - no conservation problem	Cultivation
<i>Laurus nobilis</i> L. - Defne	Leaf	Spice, traditional uses - partial conservation problem	Plantation
"	Fruit	Spice, traditional uses - partial conservation problem	Plantation
<i>Salvia triloba</i> L. - Adaçayı	Herba	Spice, herbal tea - partial conservation problem	Cultivation
<i>Capparis spinosa/ovata</i> L. - Kapari	Bud	Food - no conservation problem	no
<i>Tilia rubra / argentea</i> DC. - İhlamur	Leaves & Flowers	Herbal tea, traditional uses - partial conservation problem	Plantation
<i>Rosmarinus officinalis</i> L. - Biberiye	Herba	Spice, herbal tea - partial conservation problem	Cultivation
<i>Ceratonia siliqua</i> L. - Keçiboynuzu	Fruit	Food - no conservation problem	no
<i>Prunus mahaleb</i> L. - Mahlep	Fruit	Spice, traditional uses - partial conservation problem	Plantation
<i>Rhus coriaria</i> L. - Sumak	Fruit	Spice, traditional uses - partial conservation problem	no
<i>Glycyrrhiza glabra</i> L. - Meyankökü	Stolon	Herbal tea, traditional uses - partial conservation problem	no

Traditional Harvest & Postharvest Techniques are being used for MAPs

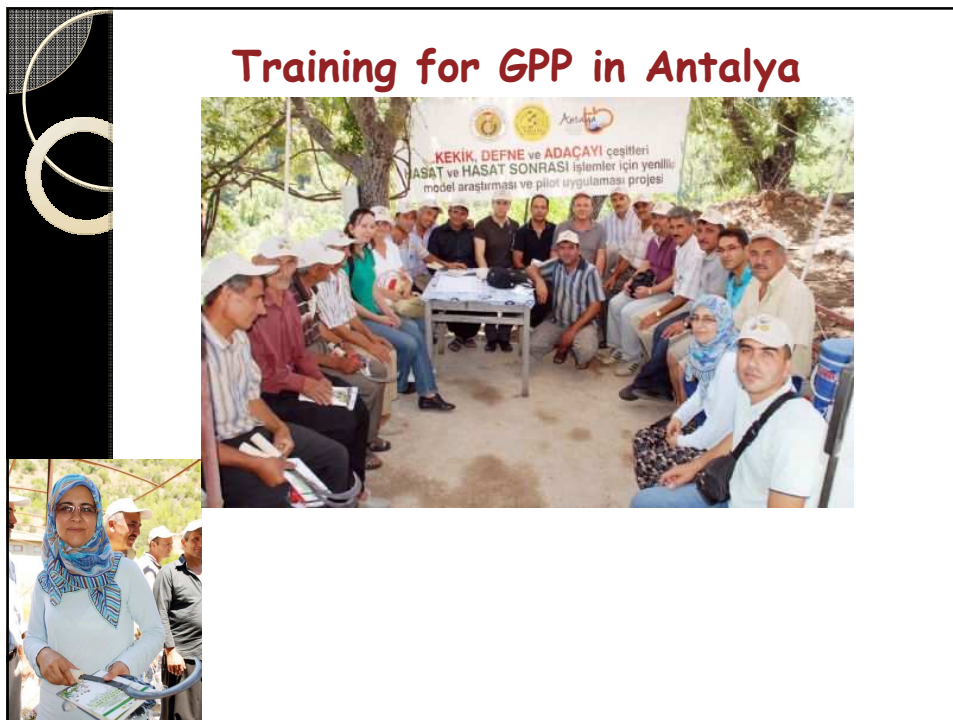


**Traditional Harvest & Postharvest
Techniques are being used for MAPs**



**Traditional Harvest & Postharvest
Techniques are being used for MAPs**





International Symposium on MAPs
www.mesmap2013.emu.edu.tr

1st MEDITERRANEAN SYMPOSIUM on
MEDICINAL and AROMATIC PLANTS

Home Invitation For Authors Registration Topics Venue Contact

Mesmap2013

- First Flyer
- Fees
- Instructions
- Program
- Deadlines
- Committees
- Transportation
- Accommodation
- SPONSORS

Announcements

→ Turkish Airlines is official airline of 1st MESMAP

All Announcements

We are happy to invite you to participate in the 1st Mediterranean Symposium on Medicinal and Aromatic Plants (MESMAP-2013) to present your research activities and share your experiences in this high profile event. The symposium will be held on April 17-20, 2013 in Gazimagosa (Famagusta), The Northern Cyprus, which will be organized by Faculty of Pharmacy, Eastern Mediterranean University (EMU) joint with AMAPMED (Association of Medicinal and Aromatic Plants of the Mediterranean).

Prof. Dr. İlkey ERDOĞAN ORHAN
Faculty of Pharmacy
Eastern Mediterranean University

Assoc. Prof. Dr. Nazım SEKEROĞLU
President of AMAPMED (ATARDER)



Thank you